



Company : Overseas Energy Holdings Ltd

Well : Westwood 1

Interval : -11.00 - 838.77 meters

Created : 08/Dec/2009 8:37:54 AM

INTEQ

DRILLING DATA PLOT

ROP

200 | 150 | 100 | 50
m/hr

ROP Backup

400 | 350 | 300 | 250

MD meters 1:500

WOB Avg

10 | 20 | 30 | 40 | 50
klbf

INTERPRETED
LITHOLOGY

-10
0
10
20
30
40
50
60
70
80
90



12-1/4" Casing Shoe set
@ 104.00 mMBRT
MW: 8.7ppg (1.04sg) FV: 36
PV: 5 GELS: 7/9 KCl: 0.0%
YP: 17 pH: 11

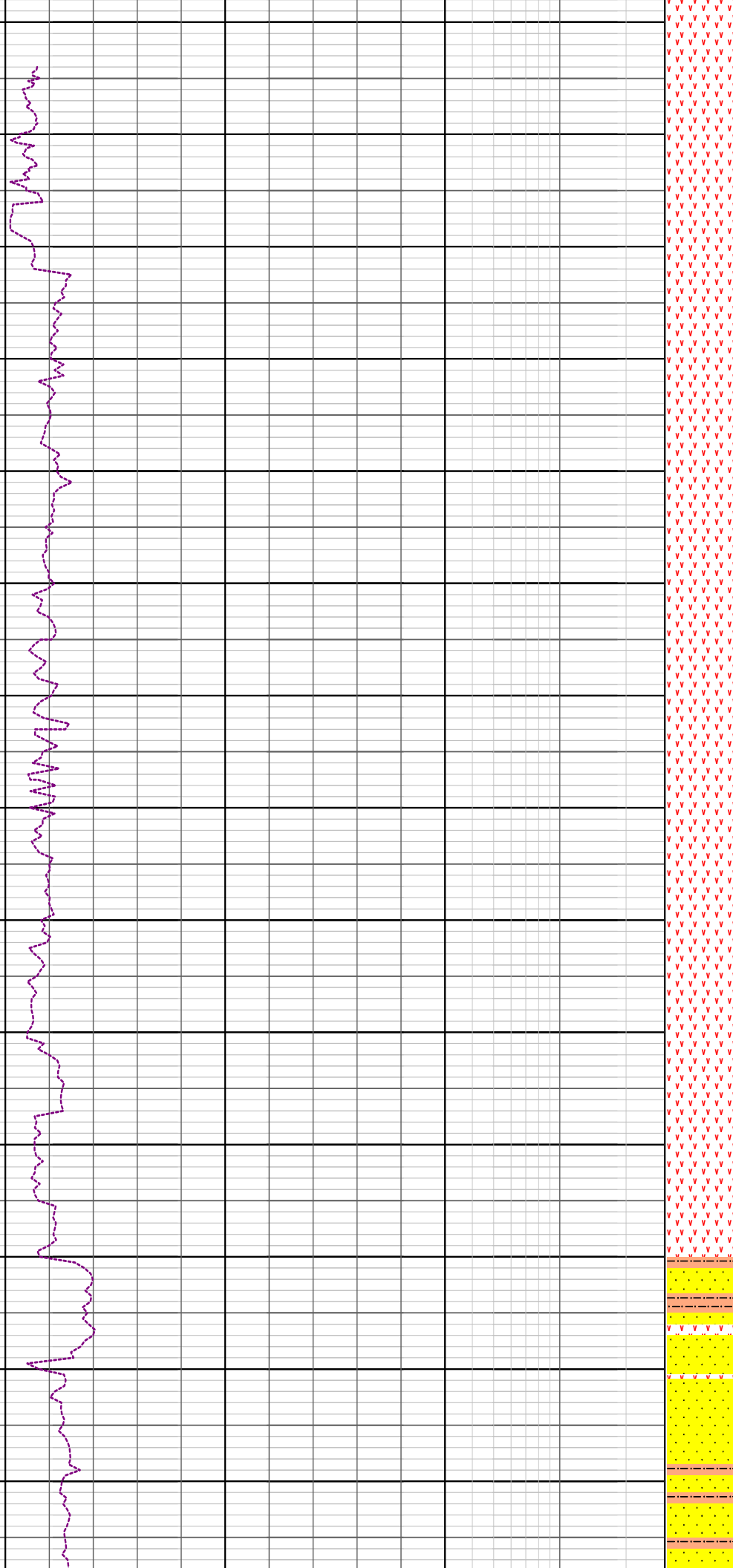
29/11/2009

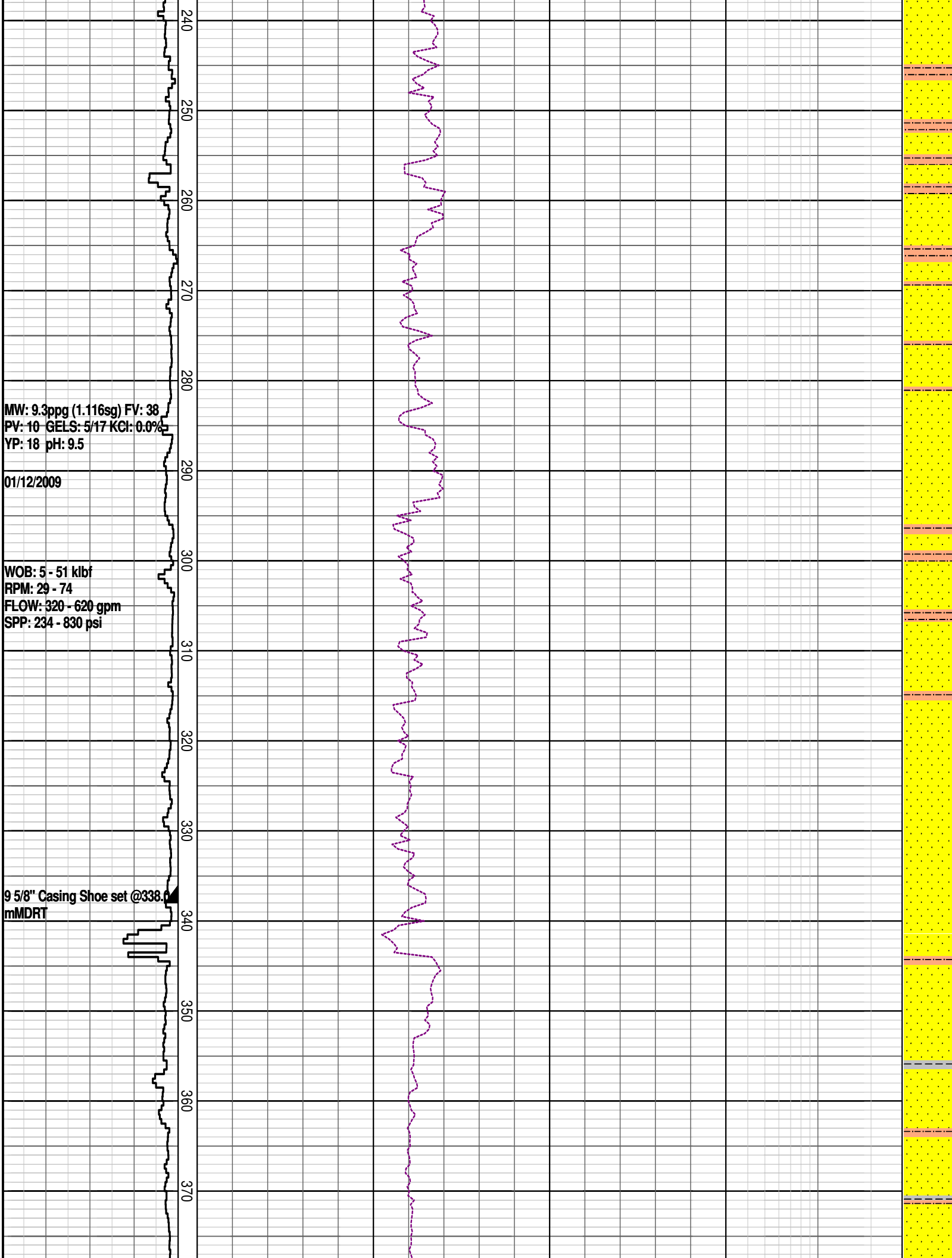
MW: 9ppg (1.08sg) FV: 31
PV: 4 GELS: 3/7 KCl: 0.0%
YP: 7 pH: 10.5

30/11/2009

WOB: 2 - 34 klbf
RPM: 29 - 94
FLOW: 278 - 597 gpm
SPP: 256 - 563 psi

100
110
120
130
140
150
160
170
180
190
200
210
220
230

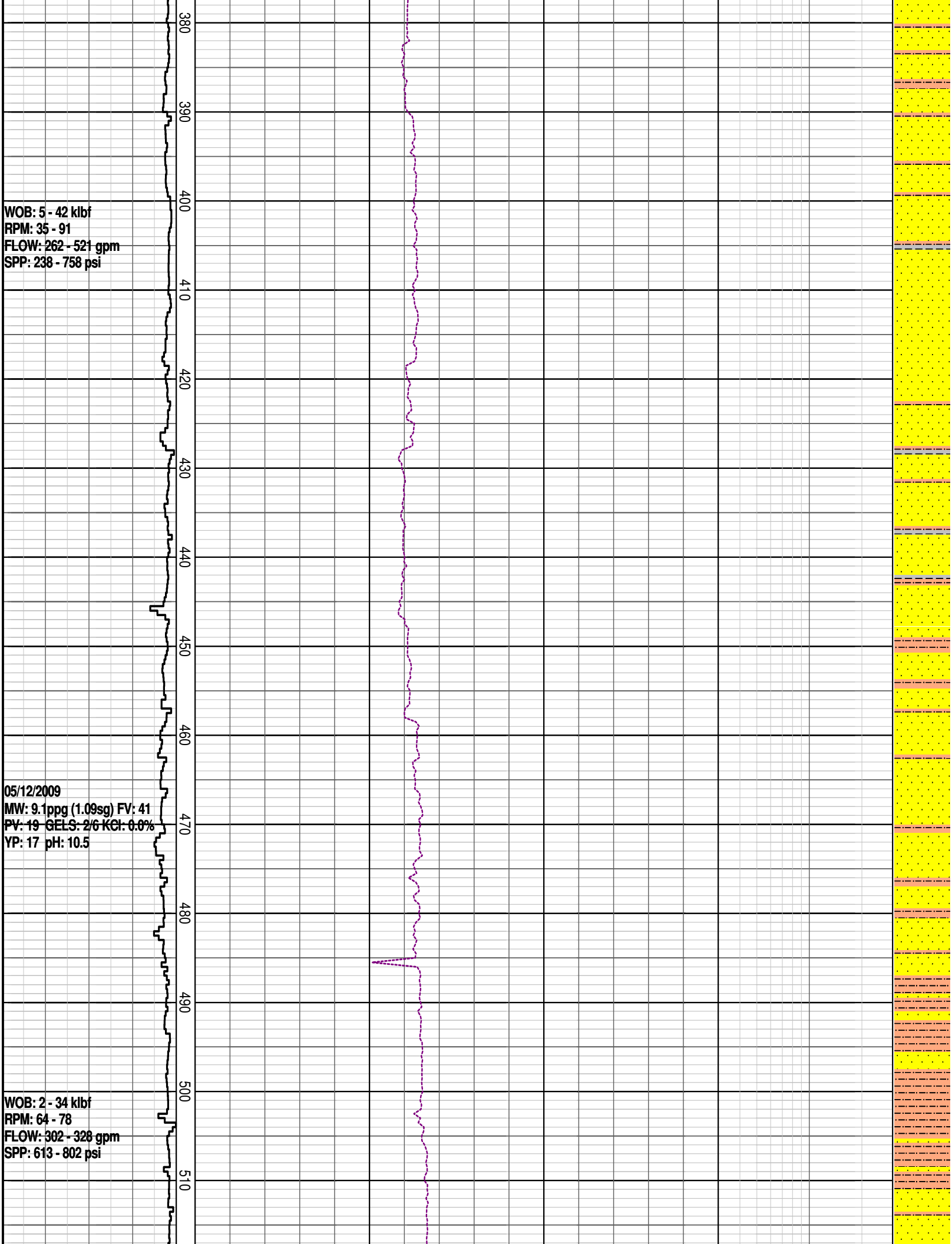


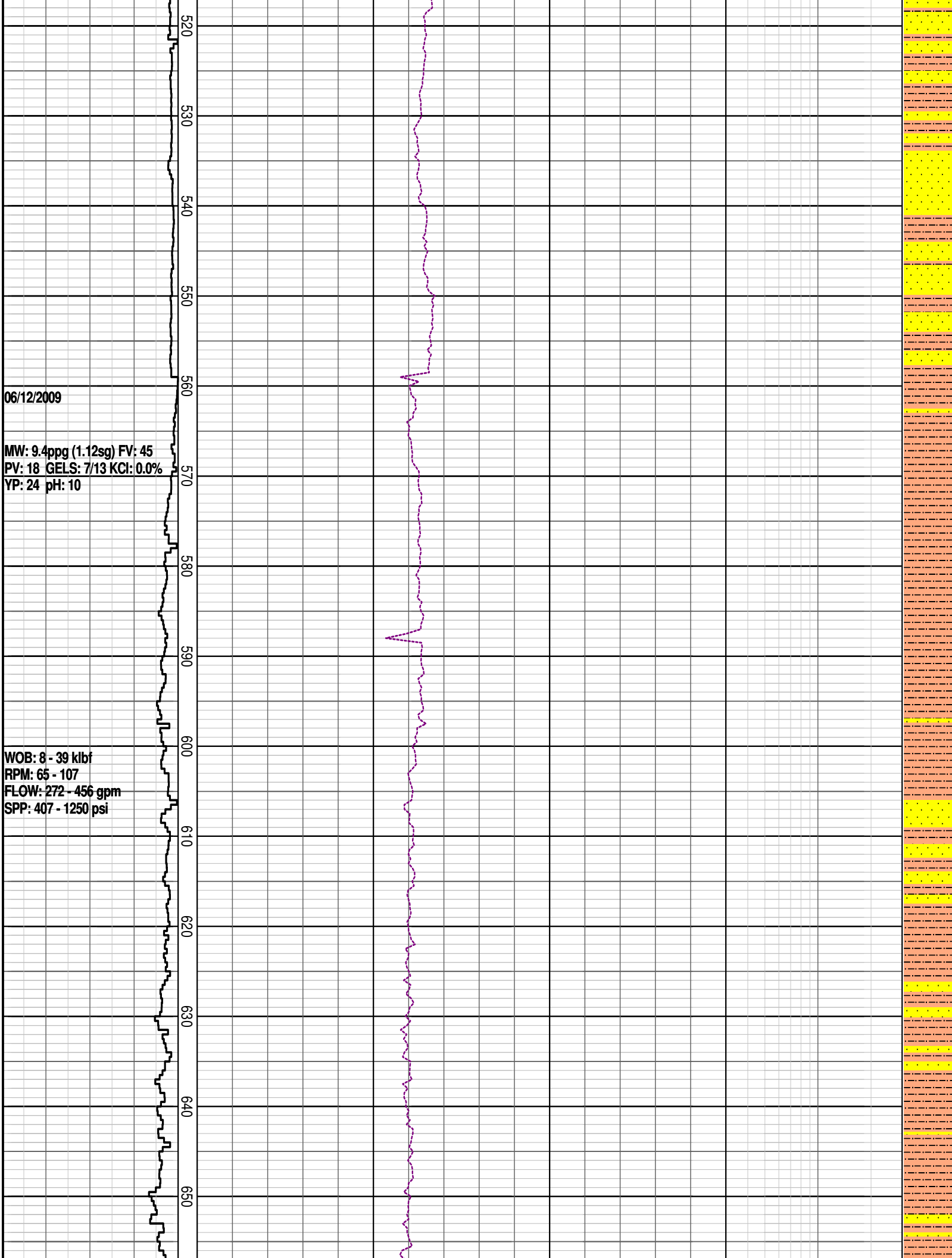


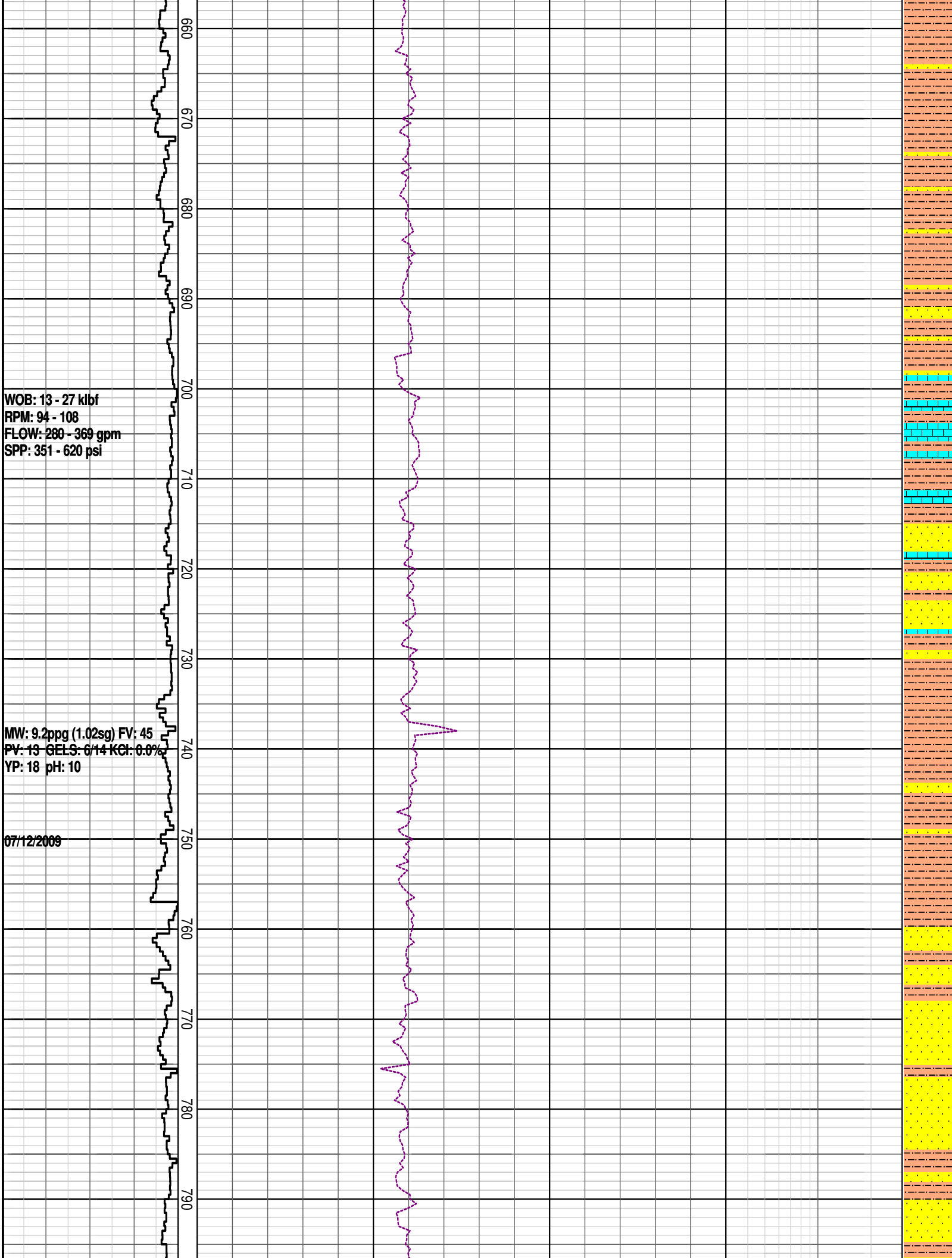
WOB: 5 - 42 klbf
RPM: 35 - 91
FLOW: 262 - 521 gpm
SPP: 238 - 758 psi

05/12/2009
MW: 9.1ppg (1.09sg) FV: 41
PV: 19 GELS: 2/6 KCl: 0.0%
YP: 17 pH: 10.5

WOB: 2 - 34 klbf
RPM: 64 - 78
FLOW: 302 - 328 gpm
SPP: 613 - 802 psi



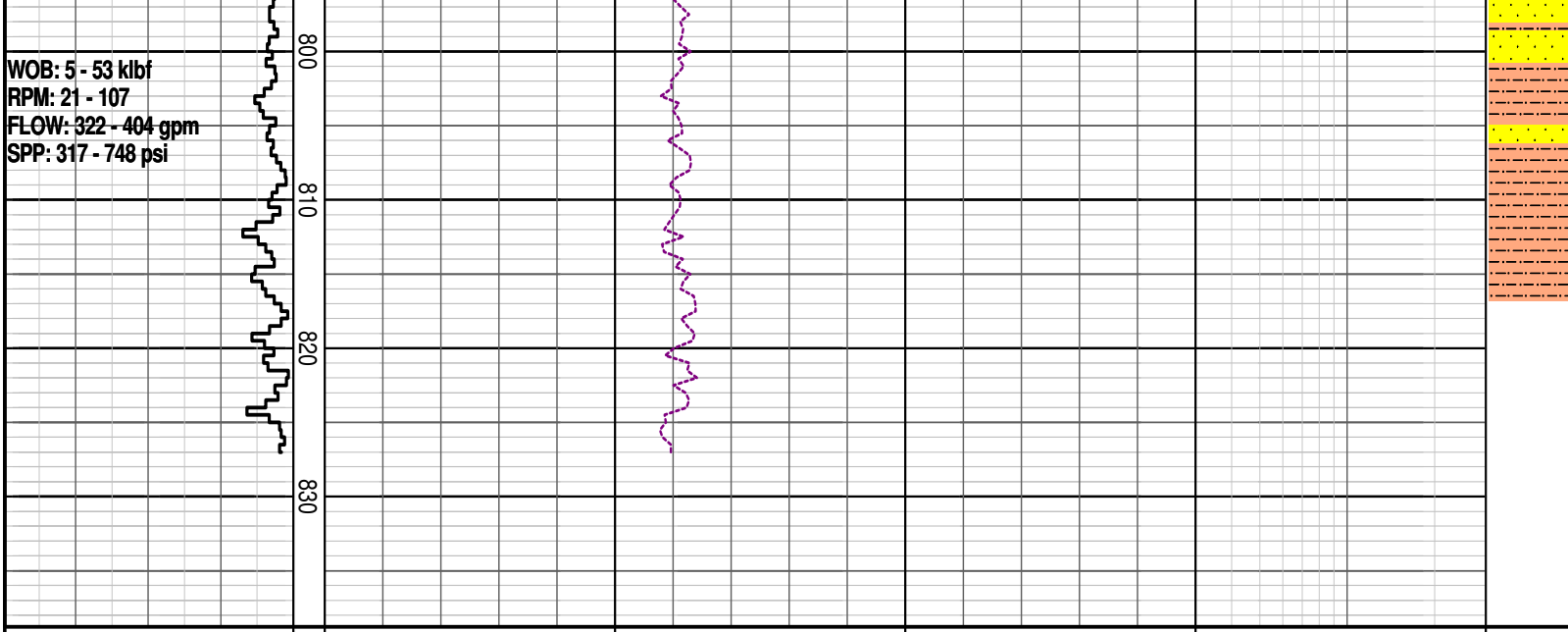




WOB: 13 - 27 klbf
RPM: 94 - 108
FLOW: 280 - 369 gpm
SPP: 351 - 620 psi

MW: 9.2ppg (1.02sg) FV: 45
PV: 13 GELS: 6/14 KCl: 0.0%
YP: 18 pH: 10

07/12/2009



DRILLING DATA PLOT

